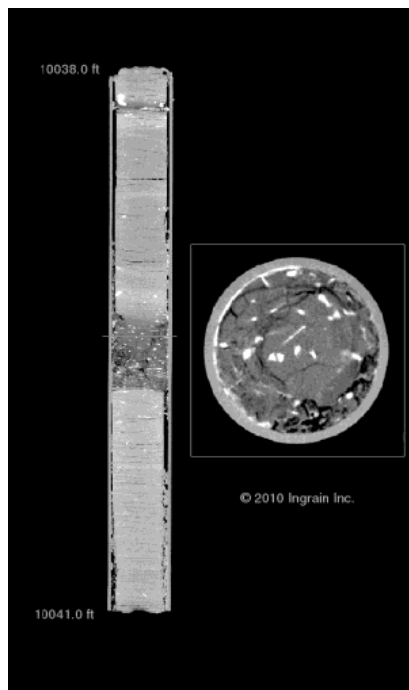
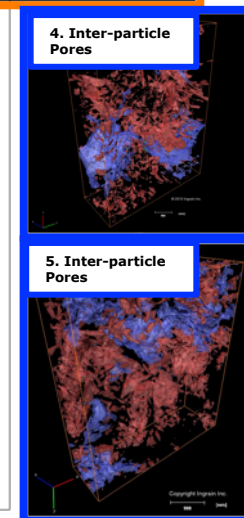
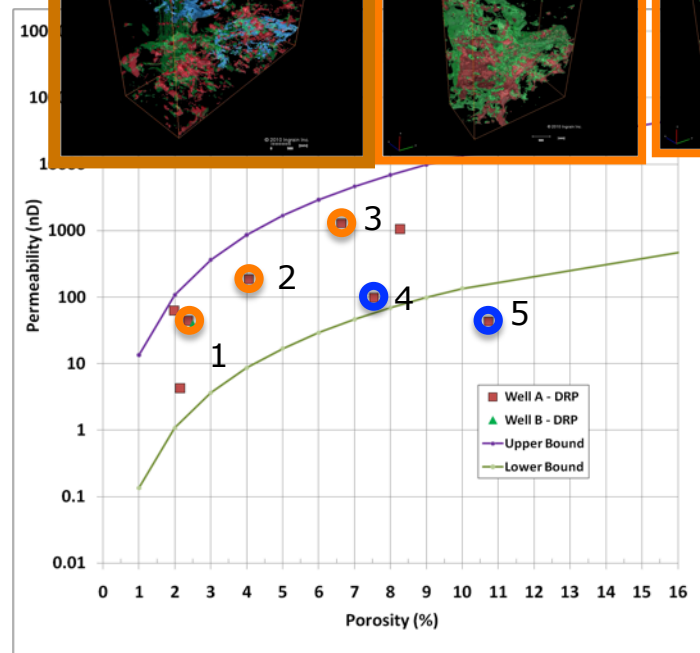
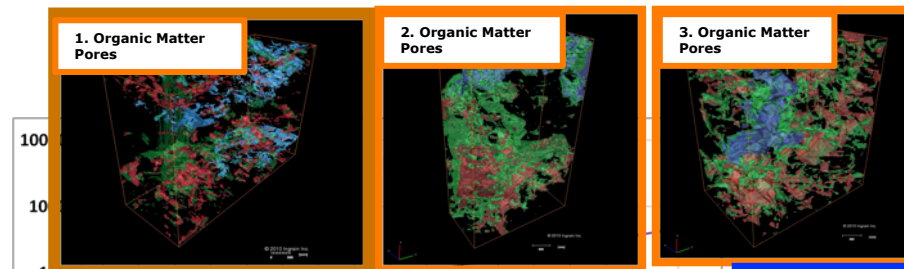
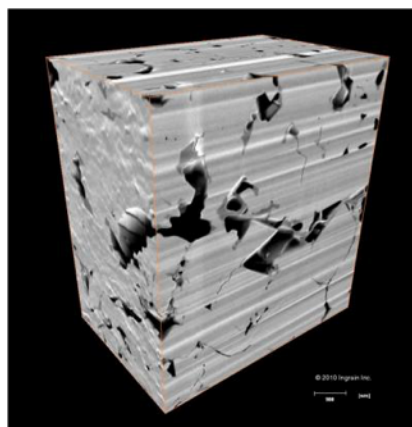
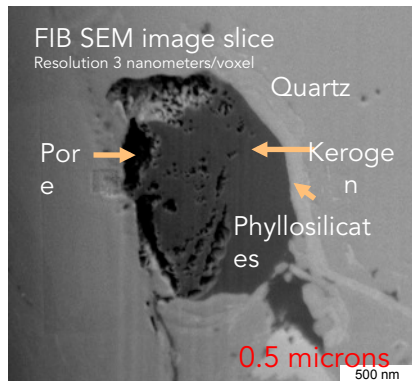


Digital Rock Physics for Shale Plays: From Whole Core to Pore Space

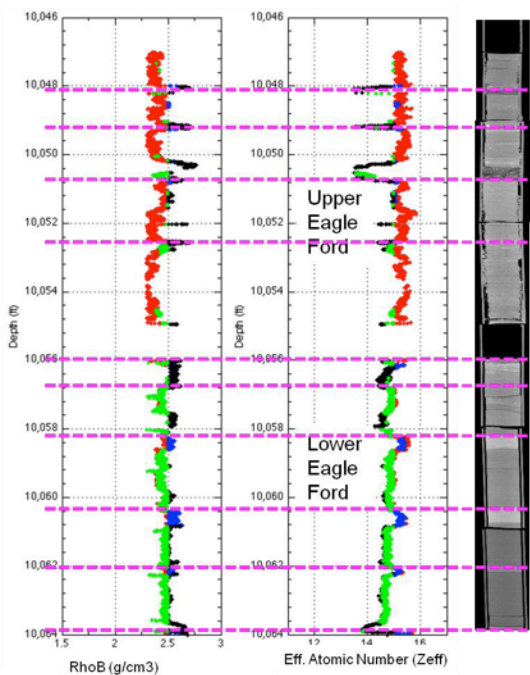
- Whole core X-ray CT Scan (~500 images/ft)
- Whole core density, atomic number log



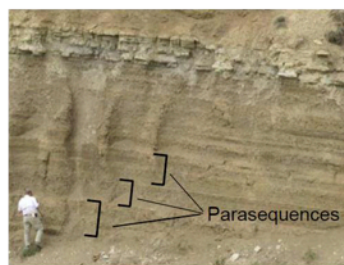
High res X-ray CT imaging of whole core reveals laminations, fractures, burrows



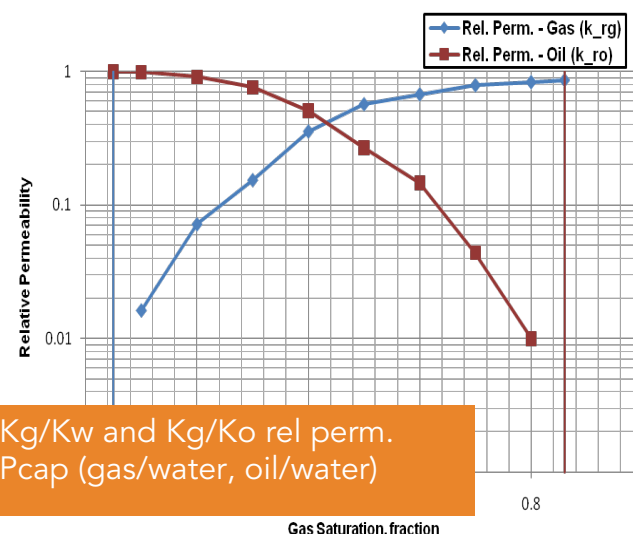
- Porosity: connected, total, organic
- Kerogen content
- Kabs; absolute perm (x, y, z)



Bulk density and effective atomic number data from CT scan reveals facies, depositional sequences



From Passey, et al; SPE131350, 2010



- Kg/Kw and Kg/Ko rel perm.
- Pcap (gas/water, oil/water)

Special Core Analysis Data

